

SUNWAY MAJESTIC

JOHOR BAHRU CITY CENTRE

FREEHOLD

Sunway's *First* SOHO Apartment in Johor Bahru City Centre

Nestled in the vibrant heart of Johor Bahru City Centre,
Sunway Majestic stands gracefully above a serene, mature neighbourhood -
offering a rare blend of tranquillity and urban sophistication.

Surrounded by established amenities, lush greenery, and a well-connected community,
it invites you to experience the perfect balance of convenience and calm -
where everything you need is just moments away,
and every day feels like a refreshing retreat.



Integrated Development
with Upcoming
Sunway Commercial Square
(Managed by Sunway Malls)



3KM to Upcoming
RTS Station



Surrounded by
Top Schools &
Specialist Hospitals



Connected Walkway to
50-Acres Urban Forest
(Hutan Bandar MJB)



Unique
Flexi-Layout
Plan

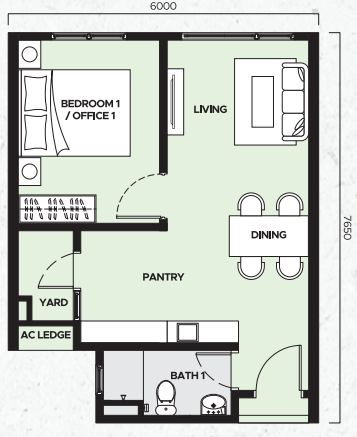
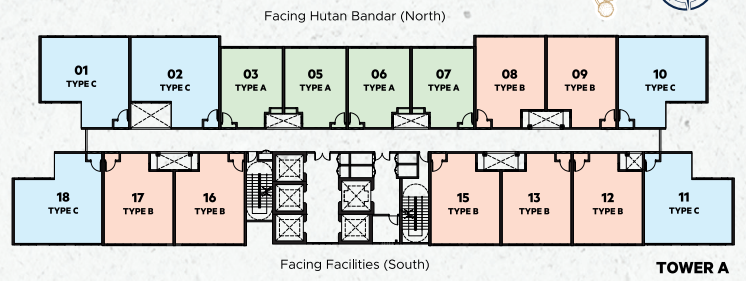
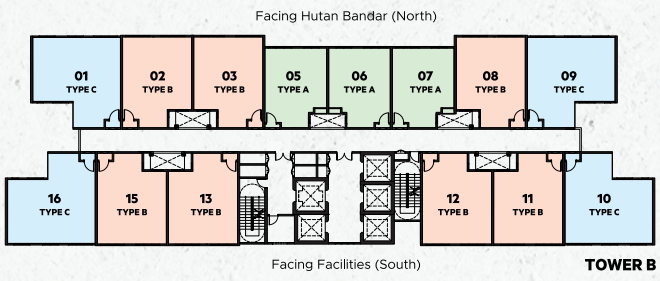


Shuttle Bus to
RTS Station

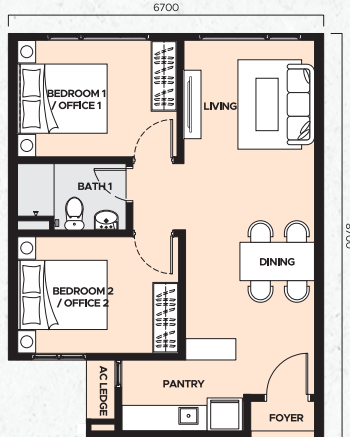


SCAN HERE
TO REGISTER

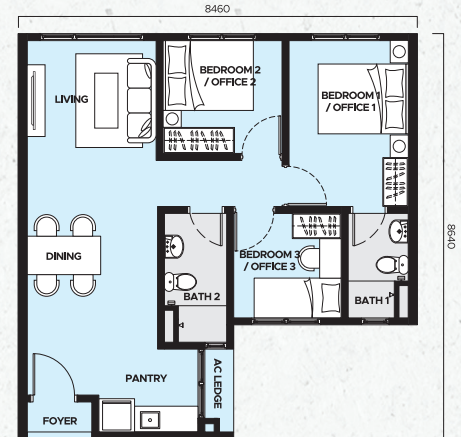
Floor Plan



TYPE A
 Approx. 473 sq.ft. / 44 sqm.
 Main Parcel 43 sqm. | Accessory Parcel: 1 sqm.
 🛏️ 1 Bedroom 🚿 1 Bathroom



TYPE B
 Approx. 592 sq.ft. / 55 sqm.
 Main Parcel: 54 sqm. | Accessory Parcel: 1 sqm.
 🛏️ 2 Bedrooms 🚿 1 Bathroom



TYPE C
 Approx. 688 sq.ft. / 64 sqm.
 Main Parcel: 62 sqm. | Accessory Parcel: 2 sqm.
 🛏️ 3 Bedrooms 🚿 2 Bathrooms

SUNWAY MAJESTIC
 JOHOR BAHRU CITY CENTRE
FREEHOLD

Woodlands Train Checkpoint (SG)
 JB CIQ Checkpoint
 RTS Station
 Komtar JBCC, City Square, UTC Johor, SMK Sultan Ismail, SJK(C) Foon Yew 2, Sultanah Aminah Hospital, KPJ Johor Specialist Hospital

3km to RTS
 350m to Sunway Commercial Square
 50-acres Hutan Bandar, MJB

26 km Senai International Airport
 17km LEGOLAND Malaysia
 3km Larkin Sentral
 350m Hutan Bandar MJB
SUNWAY MAJESTIC
 JOHOR BAHRU CITY CENTRE
 3km RTS Bukit Chagar
 4km JB CIQ Checkpoint
 5km Woodlands Checkpoint
 35km Singapore Changi Airport

Developer: Sunway Majestic Sdn Bhd 1005815-K (201201021323) - Address: Lobby Level, Menara Sunway, Jalan Lagoon Timur, Bandar Sunway, 47500 Petaling Jaya, Selangor Darul Ehsan, Malaysia - Development Name: SOHO Sunway Majestic - Development Type: Soho - Developer's License No: 31034/05-2030/0090(A) - Validity: 14/05/2025 - 13/05/2030 - Advertising & Sales Permit No: 31034-1/10-2028/0817(N-S) - Validity: 06/10/2025 - 05/10/2028 - Building Plan Approving Authority: Majlis Bandaraya Johor Bahru - Building Plan Reference No: MBJ/B/U/2024/14/BGN/219/KOM(17) - Land Tenure: Freehold - Land Encumbrances: Charge (RHB Bank Berhad) - Expected Completion Date: October 2029 - Total Units: Tower A: 540 units; Tower B: 472 units - Selling Price: Tower A: RM538,800 (Min) - RM1,030,800 (Max); Tower B: RM562,800 (Min) - RM1,015,200 (Max) - BumiPutera Discount: 15%

The information contained in this material is subject to change and cannot form part of an offer or contract. All renderings are artist's impression only. All the above items are subject to variations, modifications and substitutions as may be required by the Authorities or recommended by the Architect or Engineer.
 THIS ADVERTISEMENT HAS BEEN APPROVED BY THE NATIONAL HOUSING DEPARTMENT. INFORMATION ABOUT THE DEVELOPMENT CAN BE CHECKED AT THE PORTAL TEJUH.KPKT.GOV.MY

SUNWAY MAJESTIC SDN. BHD. (1005815-K)
SUNWAY MAJESTIC SALES GALLERY
 Jalan Yahya Awal, Bandar Johor Bahru,
 80100 Johor Bahru, Johor Darul Ta'zim.

sunwaycityiskandarputeri

+607-221 6999
www.sunwaymajestic.com

WITH *You*
FOR Generations

SUNWAY PROPERTY
 Master Community Developer